



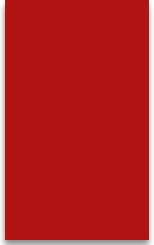
St. Matthew Vision 2020

WITH EYES OF FAITH:
NEEDS & DREAMS

Vision Committee – Fall 2018

Identified Several Areas

- ▶ Enrollment
- ▶ Teacher Support
- ▶ Curriculum
- ▶ Facilities – Old and New/Parish and School



Master Plan

Needs and Dreams

- ▶ Phases established
- ▶ NEEDS Phase
- ▶ DREAMS Phase



Greatest NEEDS in the Oldest Part of the School

- ▶ 13 oldest classrooms need significant upgrades
 - ▶ NEW windows and doors
 - ▶ NEW HVAC systems
 - ▶ NEW efficient lighting
 - ▶ NEW ceilings and floor
 - ▶ NEW cabinetry





Remodeled Classrooms



Greatest NEEDS Campus-Wide

- ▶ **NEED** technology for church to continue providing virtual ministries for our living parish and improvements in the school.
- ▶ **NEED** to replace the original boiler
- ▶ **NEED** to eliminate the portable classrooms
- ▶ **NEED** to create additional administrative offices and conference areas
- ▶ **NEED** more security campus-wide
- ▶ [Vision 2020 Video](#)



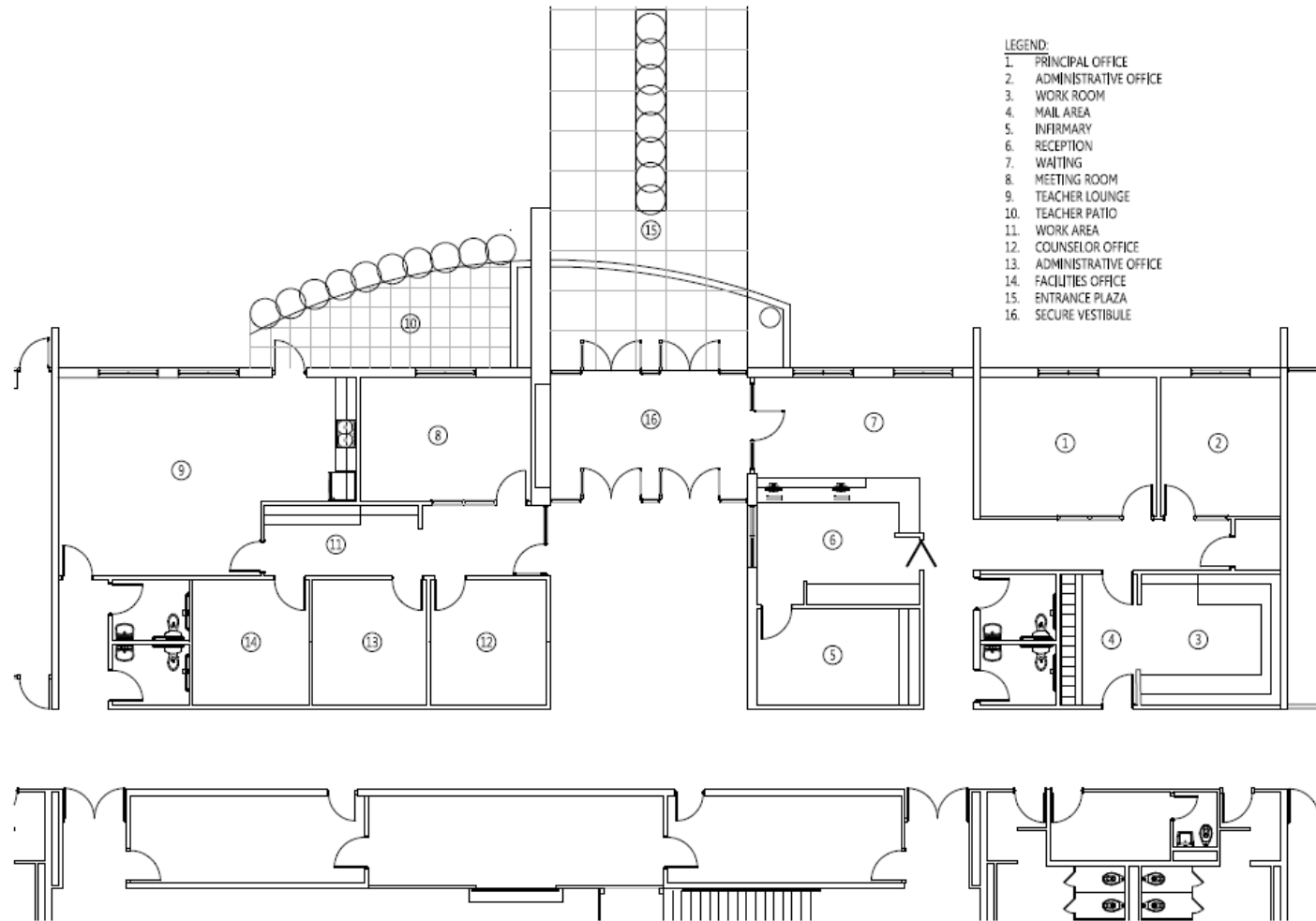
How does meeting our NEEDS improve Technology and Security?

- ▶ Upgrade campus-wide phone system
- ▶ Upgrade campus-wide security including:
 - ▶ A door access system for Adoration Chapel, church and school entrances.
 - ▶ Cameras on the entire campus
- ▶ In the Church:
 - ▶ Upgrade technology and internet for the virtual ministry
 - ▶ Improve the sound
 - ▶ Bell Tower improvements

Greatest NEEDS in the Administrative Area



- ▶ Remodeled Administrative offices
- ▶ Improve and secure the school entrance
 - ▶ Visitors enter directly into the offices.
- ▶ New Faculty Lounge
- ▶ Dedicated Health Room
- ▶ Addition of conference rooms



- LEGEND:
- 1. PRINCIPAL OFFICE
 - 2. ADMINISTRATIVE OFFICE
 - 3. WORK ROOM
 - 4. MAIL AREA
 - 5. INFIRMARY
 - 6. RECEPTION
 - 7. WAITING
 - 8. MEETING ROOM
 - 9. TEACHER LOUNGE
 - 10. TEACHER PATIO
 - 11. WORK AREA
 - 12. COUNSELOR OFFICE
 - 13. ADMINISTRATIVE OFFICE
 - 14. FACILITIES OFFICE
 - 15. ENTRANCE PLAZA
 - 16. SECURE VESTIBULE

Administrative Area

A
SD1.01

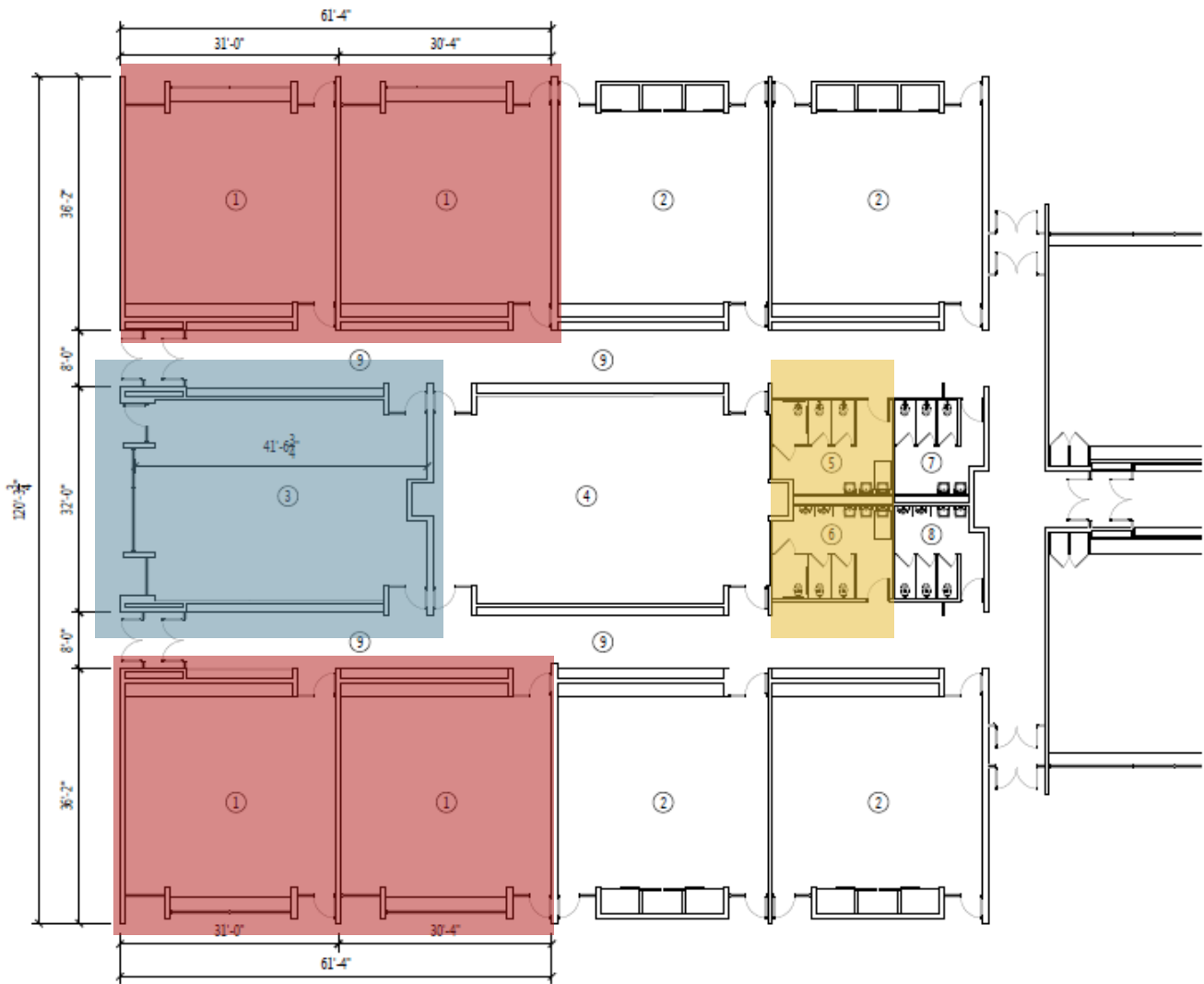
ADMINISTRATIVE AREA

SCALE: 3/32" = 1'-0"

Opportunity to Renew Entire Educational Experience

How can our
DREAMS affect
Student
Enrichment &
Development?

- ▶ Expand the Junior High wing to the west
 - ▶ 5 NEW Classrooms including a STEM Classroom
 - ▶ Additional bathrooms
 - ▶ Spanish classroom in the main building (in addition to Art)
 - ▶ Begin a Preschool 3-year-old program
- ▶ NEW Music & Band Room to be integrated into Performing Arts Center in the gym.



- LEGEND:
- 1. NEW CLASSROOM
 - 2. EXISTING CLASSROOM
 - 3. NEW STEM CLASSROOM
 - 4. MULTI PURPOSE ROOM
 - 5. NEW GIRLS RESTROOM
 - 6. NEW BOYS RESTROOM
 - 7. EXISTING GIRLS RESTROOM
 - 8. EXISTING BOYS RESTROOM
 - 9. 8' WIDE CORRIDOR WITH LOCKERS

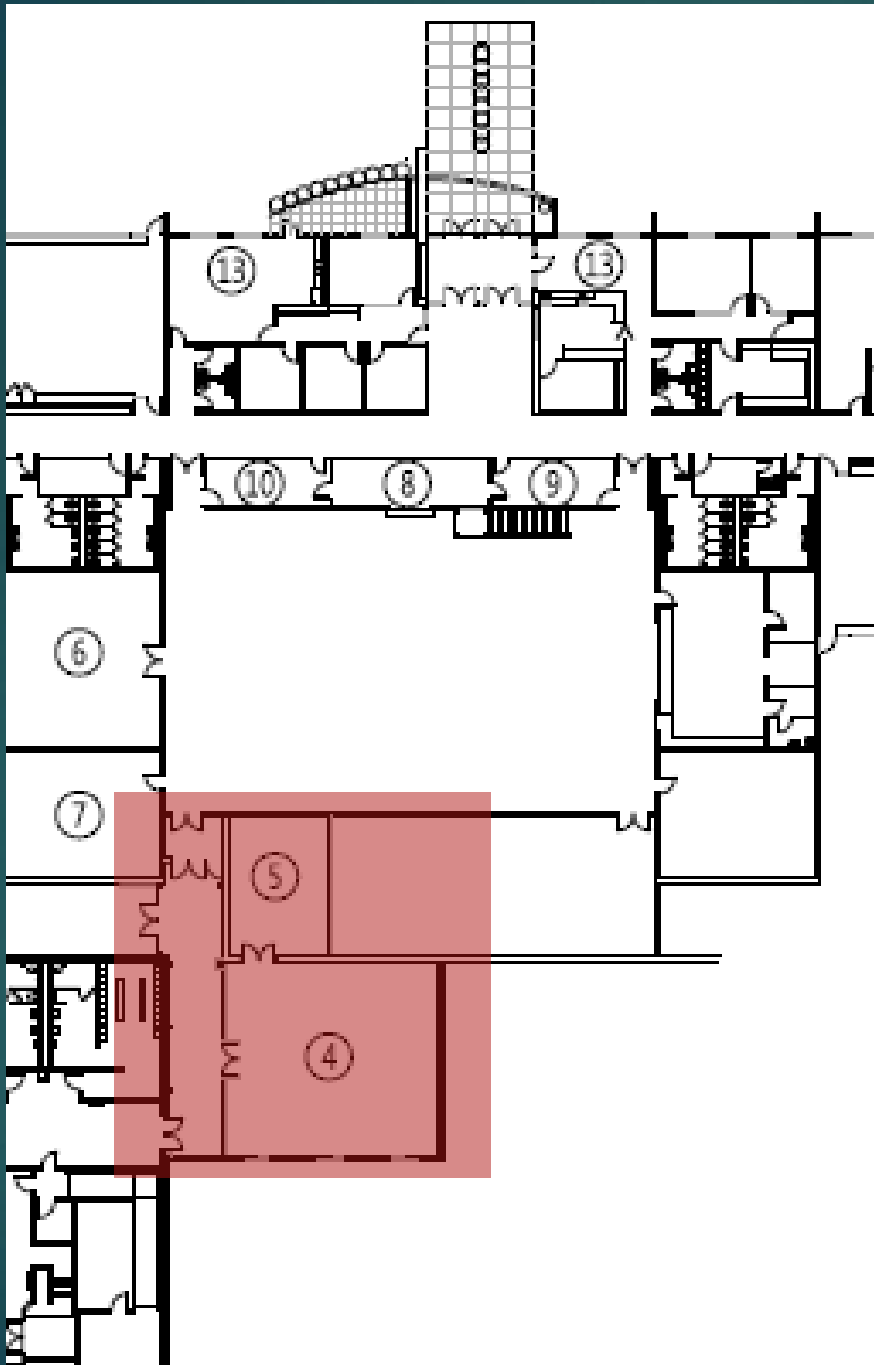
4 New Classrooms

STEM LAB

Additional Bathrooms

A
SD1.02

JUNIOR HIGH CLASSROOM AREA - SCHEME 2
SCALE: 1/16" = 1'-0"



Music and Band Classroom

Vision 2020: With Eyes of Faith

- ▶ Start with the Church and School Needs = \$3.5 million
 - ▶ Remodeling the oldest part of the school
 - ▶ Campus-wide technology and security enhancements
 - ▶ Administrative Area
- ▶ Dreams = \$2.5 million
 - ▶ 4 new classrooms
 - ▶ STEM
 - ▶ Music and Band classroom
 - ▶ 3-year-old Preschool Program
 - ▶ Devotional Areas and landscaping

Campaign Timeline

- ▶ Pledge Phase begins now until the end of December
- ▶ Redemption Phase ~
 - ▶ Begins immediately ~ November 2020
 - ▶ Continues through December 2022
 - ▶ If needed through December 2023

Campaign Steps

- ▶ You are receiving a Vision 2020 brochure including:
 - ▶ An insert highlighting our Needs and Dreams
 - ▶ On the back is a section titled, “How can I help?”.
 - ▶ Please visit the Vision 2020 webpage ~ stmatt.net/vision2020
 - ▶ A pledge card